



HOTEL
LA CAMINERA
CLUB DE CAMPO

AERODROME – TECHNICAL DATA SHEET

OACI code: LENE-CIUDAD REAL

1. PLACE/NAME INDICATION / USE OF THE AERODROME

"La Caminera" aerodrome"

"Use: restricted to private and daytime visual use"

2. GEOGRAPHICAL AND ADMINISTRATIVE DATA FOR THE AERODROME

ARP: N 38° 40' 10,993 " W 3° 18' 12,407" W"

Elevation: 766 m

Classification key: 2B

Reference temperature: 33.73°C

Magnetic declination:

Date: 01/01/2015

Declination 53' [West]

Secular Variation 7.2' [East]

AD management: Promociones SAGEMAR S.A.

AD type: restricted use

Address: Camino de Altamar, s/n, 13740 Torrenueva, Ciudad Real

TEL: +34 926 34 47 33

Observations:

3. RESCUE AND FIRE-EXTINGUISHING SERVICES

Fire category: FIRE CAT 3

Rescue equipment: yes

Observations:

4. RUNWAY PHYSICAL SPECIFICATIONS

Measurements:

Runway	Orientation	DIM (m)	PSN THRESHOLD	THRESHOLD ELEV (m)	Strip (m)	PCN runway
08	MAG: 079°	1400x23	38°40' 6,59" N 3°18' 38,71" W	779,10	1520x80	Concrete PCN 20/F/B/X7/T
26	MAG: 259°	1400x23	38°40' 16,06" N 3°17' 42,05" W	779,59	1520x80	Concrete PCN 20/F/B/X7/T

Observations:

Profile

- Lengthwise: descending incline of 2% for the first 710 m of runway (from left to right) and an ascending incline also of 2% for the remaining 690 m.
- Crosswise: 1.5% gabled

Strip

- Length: 1520 m
- Width: 80 m
- Inclines: same as adjacent runway
- Pavement type: the same as the adjacent runway

5. DECLARED DISTANCES

RWY	TORA (m)	TODA (m)	ASDA (m)	LDA (m)
08	1400	1400	1400	1400
26	1400	1400	1400	1400

6. DETAILS OF THE MOVEMENT AREA

Platform

- Length: 30 m
- Width: 70 m
- Pavement: concrete
- Strength: PCN 20/F/B/X7/T
- Parking positions: 2

Taxiing runways

- Length: 54 m
- Width: 14 m
- Pavement: the same as the landing strip it serves
- Strength: the same as the landing strip it serves
- Lengthwise incline: 1.5%
- Crosswise incline: 1.5% gabled

■ Test positions: NO

■ Observations:

7. VISUAL ASSISTANCE

Taxiing guide systems:

Runway signage

- Runway threshold: yes
- Runway designator: yes
- Runway axis: yes
- Runway edge: no

Signage for taxiing runway

- Street axis: yes
- Street edge: yes
- Taxiing waiting point: yes

■ Wind cone: yes

■ Observations:

8. ATS AIR SPACE

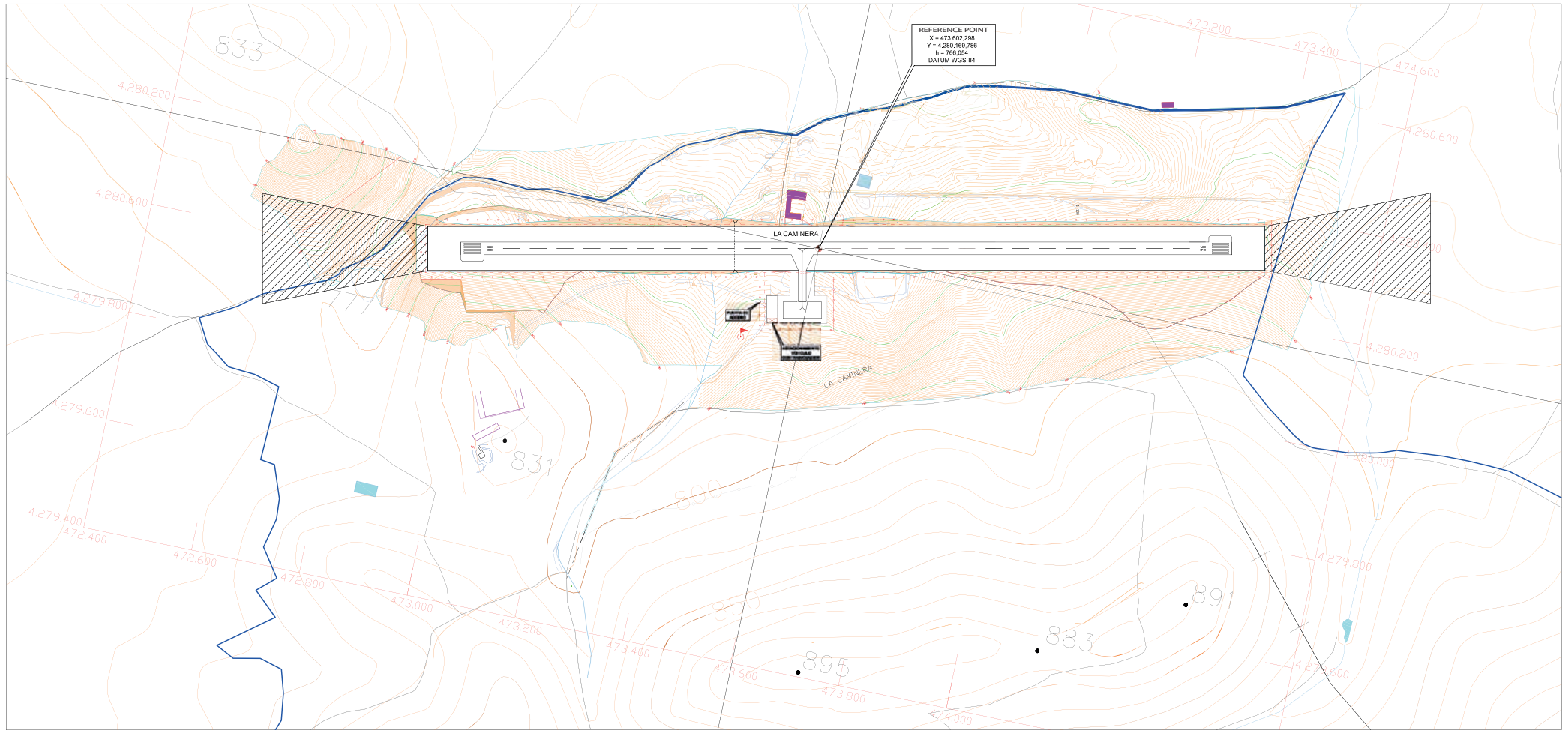
FIR: Madrid / Madrid / Aerial space class: G / Flight information service up to FL150

Class	Type of flight	Separation provided	Services provided	Speed limitations	Radio communication requirements	Subject to ATC authorisation
G	IFR	None	Flight information service	250 kt IAS below FL100	Continued in both directions	NO
	VFR	None	Flight information service	250 kt IAS below FL100	NO	NO

9. FLIGHT PROCEDURES

N/A

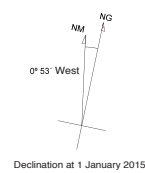
Observations:



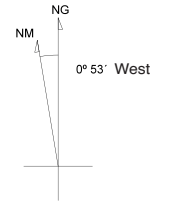
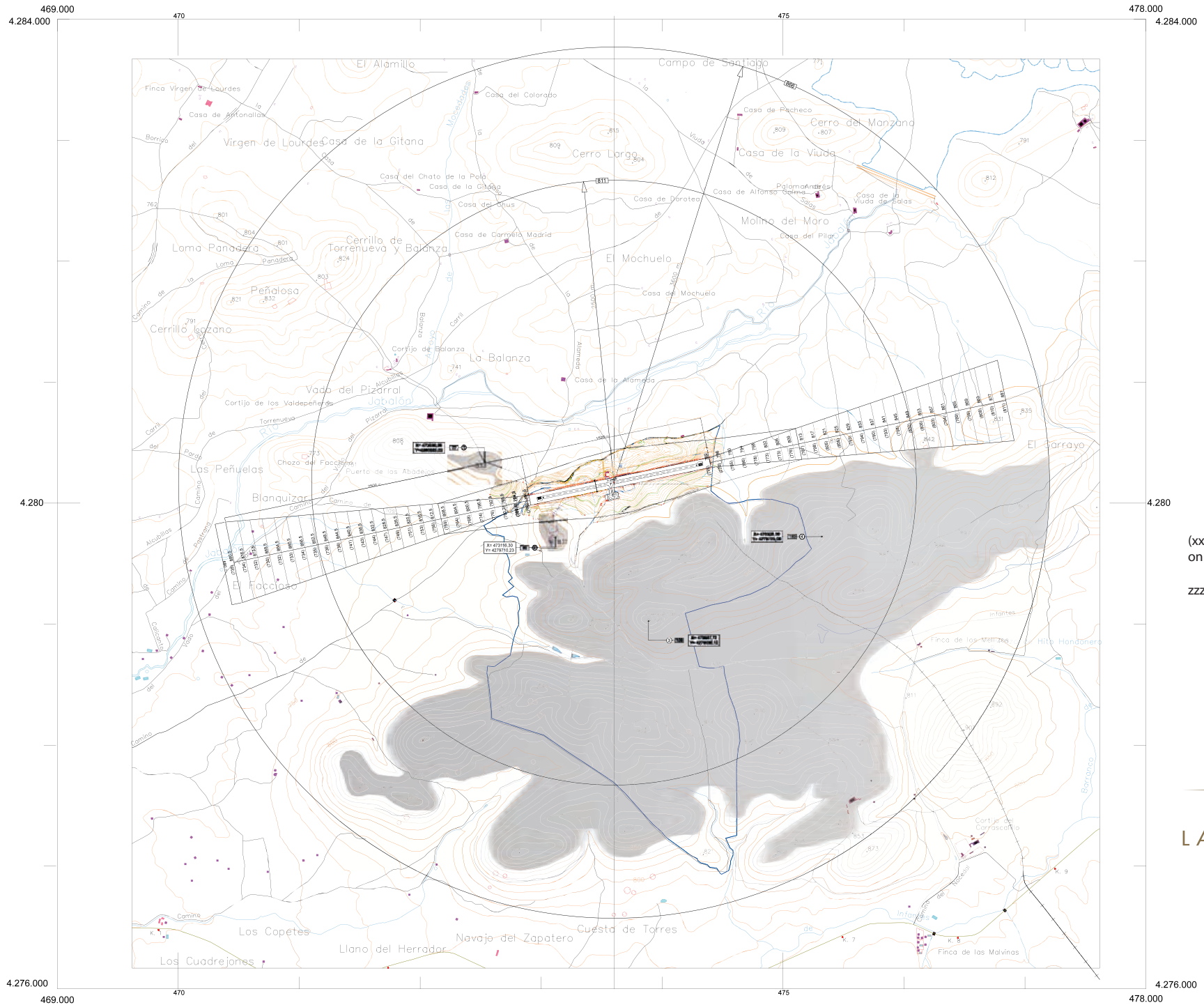
	REFERENCE POINT		FENCE		GUTTERA
	RUNWAY PROTECTION AREA		WIND CONE		

	TORA	TODA	ASDA	LDA
RUNWAY 08	1400 m.	1400 m.	1400 m.	1400 m.
RUNWAY 26	1400 m.	1400 m.	1400 m.	1400 m.

Graphic Scale



HOTEL
LA CAMINERA
CLUB DE CAMPO

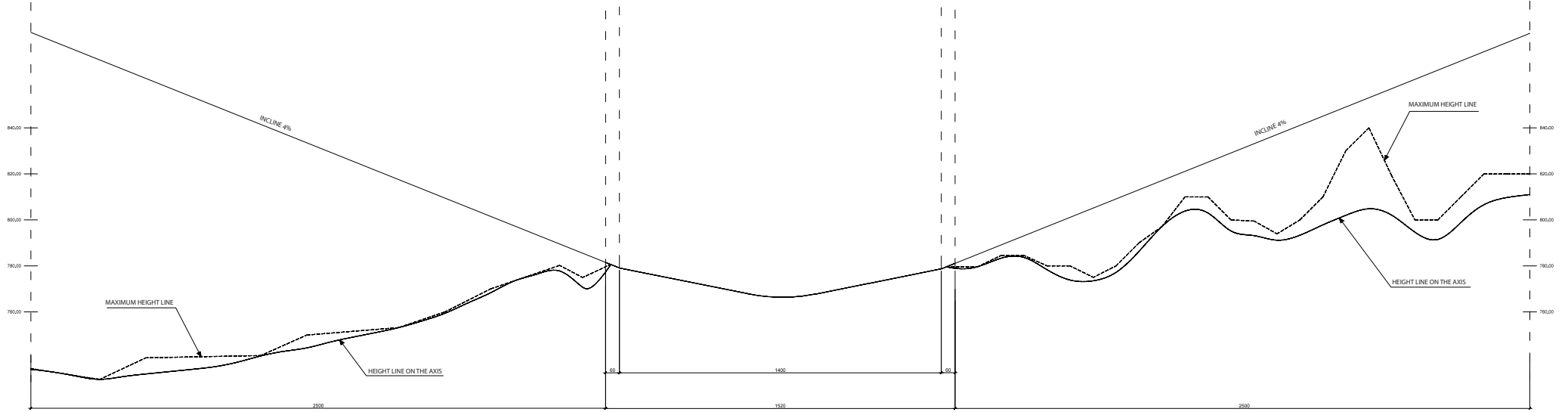
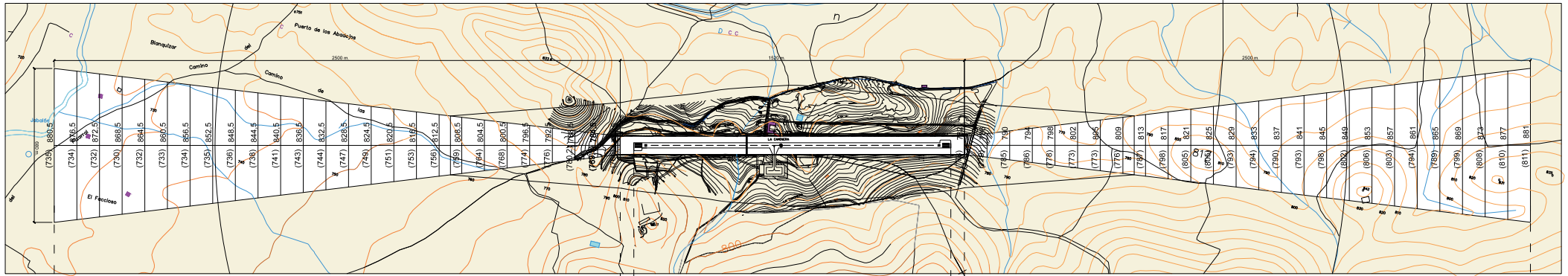


Declination at 1 January 2015

(xxx) Height of the terrain on the axis of the paths.

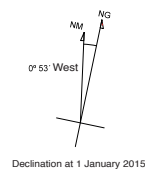
zzz Height of the path on its axis.

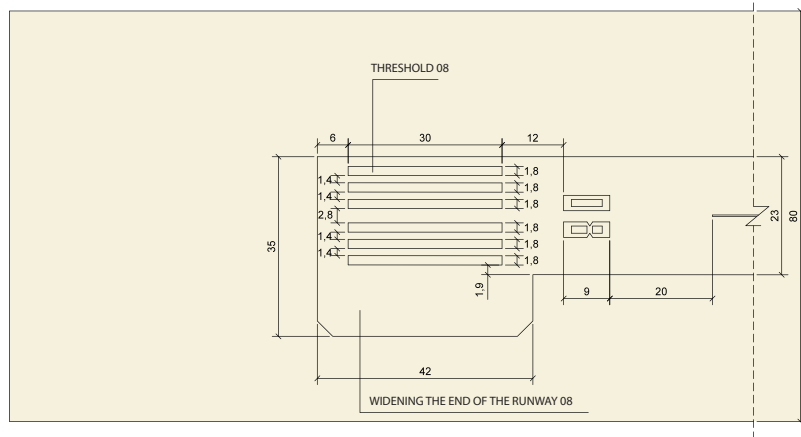




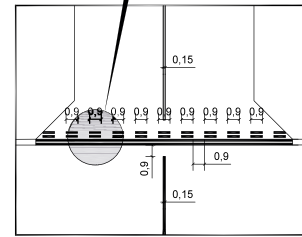
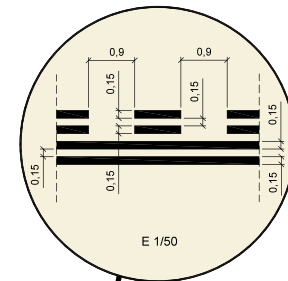
(xxx) Height of the terrain
on the axis of the paths.

zzz Height of the path on its axis.

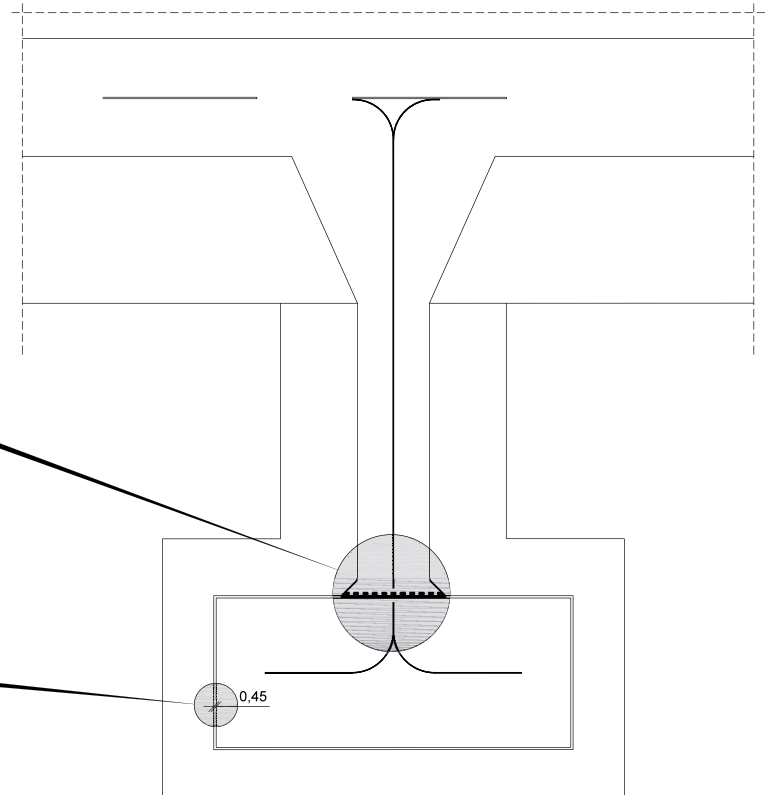




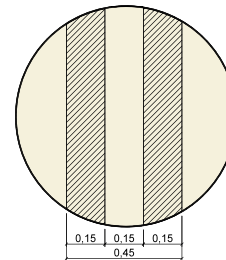
DETAIL OF WIDENING THE END OF THE RUNWAY AND THRESHOLD 08



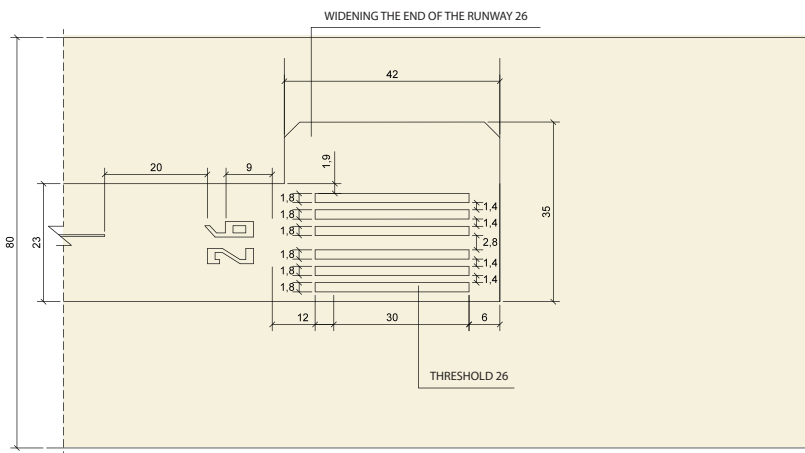
WAITING POINT SIGN
YELLOW PAINT



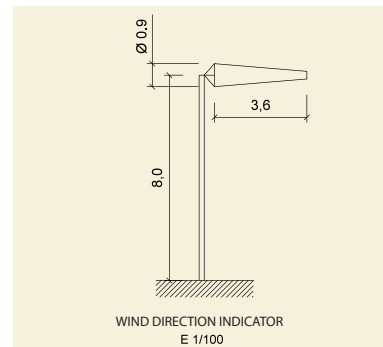
PARKING DETAIL



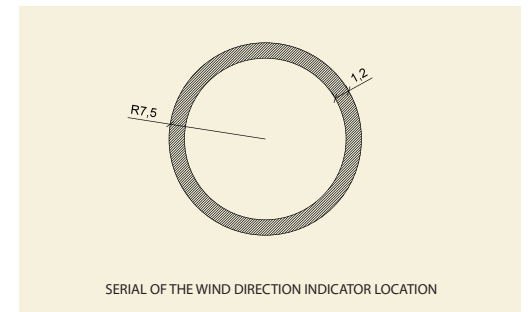
NON-RESISTANT SURFACE AREA SERIAL
(EDGE OF THE PLATFORM)



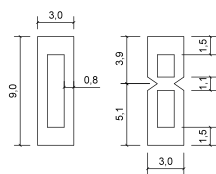
DETAIL OF WIDENING THE END OF THE RUNWAY AND THRESHOLD 26



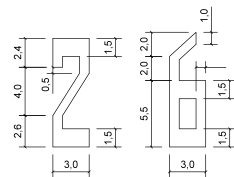
WIND DIRECTION INDICATOR
E 1/100



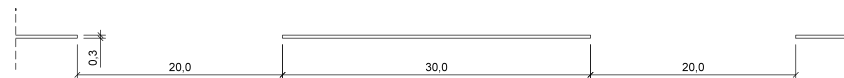
SERIAL OF THE WIND DIRECTION INDICATOR LOCATION



RUNWAY 08



RUNWAY 26



RUNWAY AXIS





HOTEL
LA CAMINERA
CLUB DE CAMPO

Tel. +34 926 344 733
hotelca@salshotels.com - www.hotellacaminera.com